

Hi, my name is Patryk and I live in Poland.

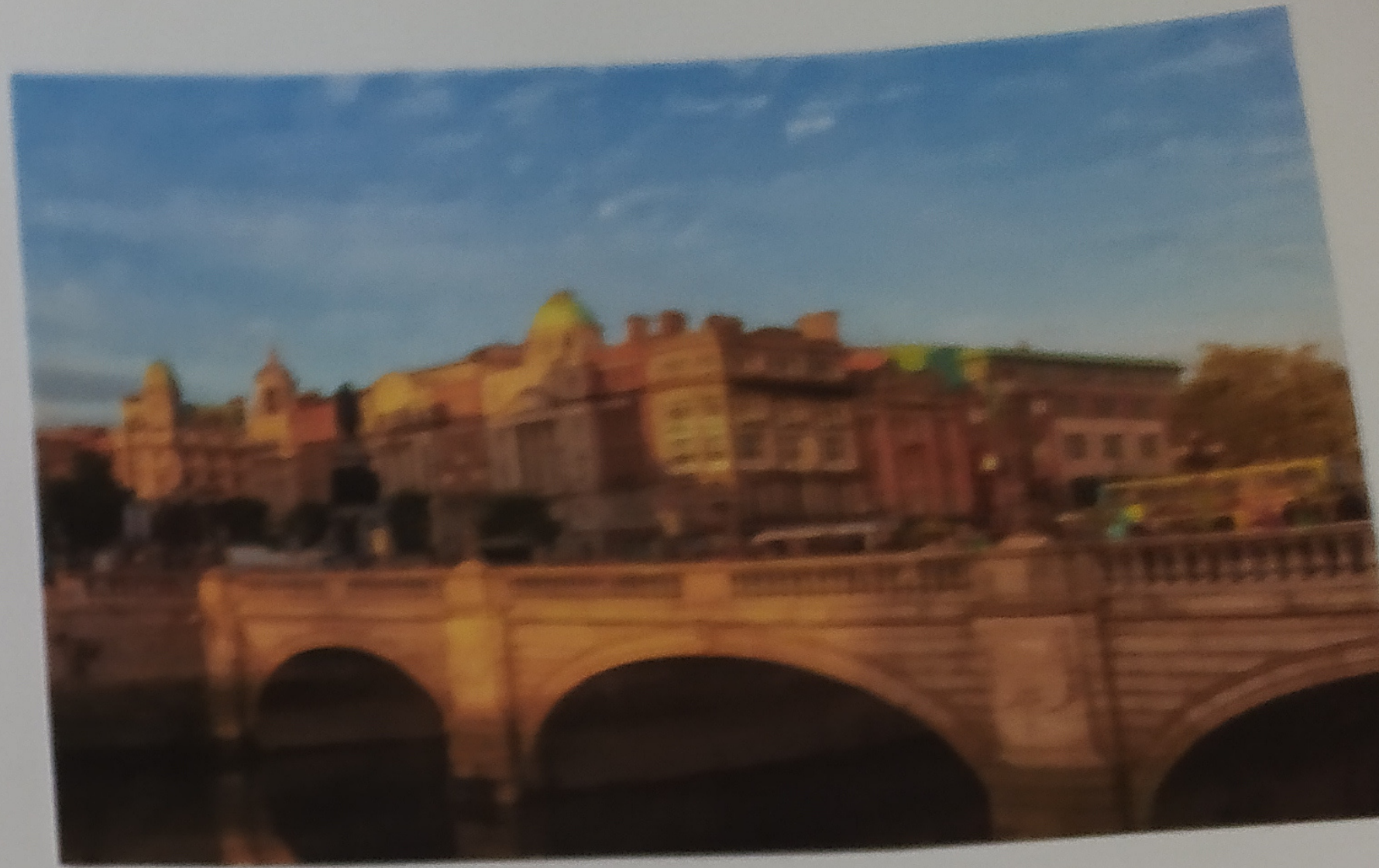
I would like to know your country. Where is Ireland located?

Hi, my name is Aine.

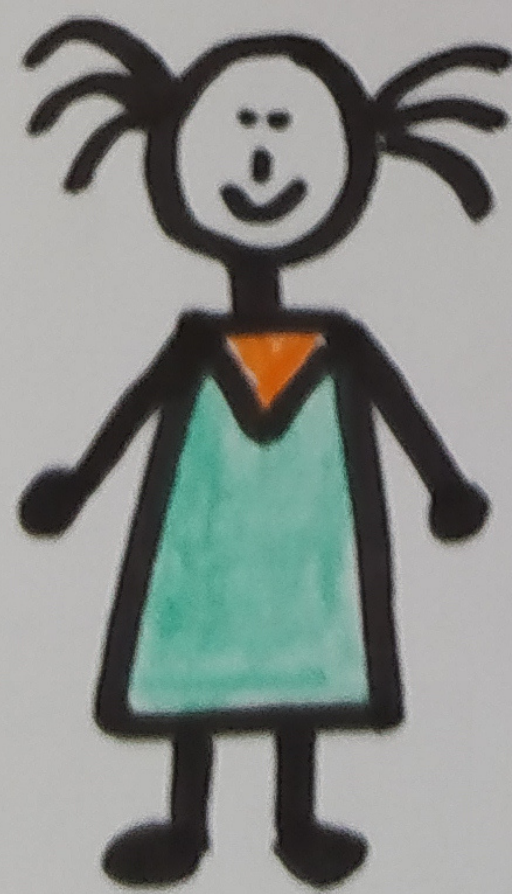
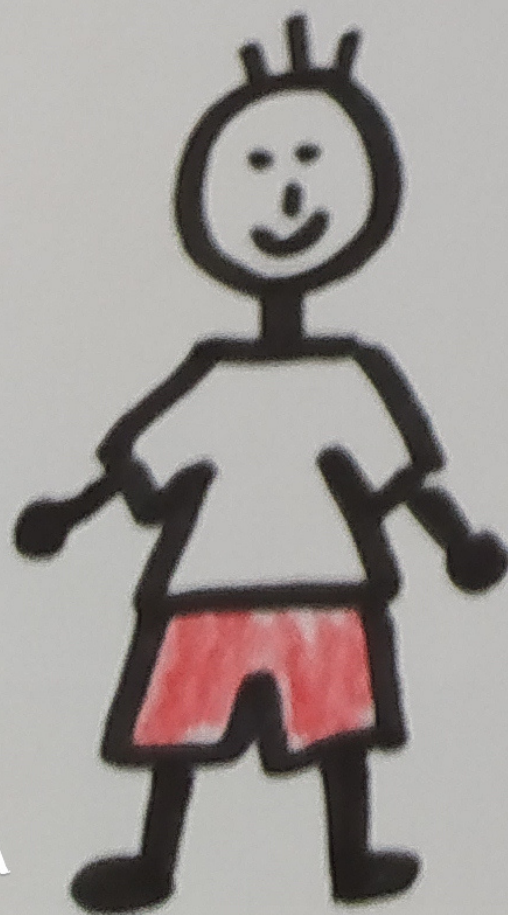
Ireland is a West European country located on the island.



What city is the capital of Ireland?



The capital city of Ireland is Dublin.



What are the national symbols of Ireland?

The national symbols of Ireland are the four-leaf clover, the harp and the mascot - Leprechaun.



Who is Ireland's patron saint?

The patron saint of Ireland is St. Patrick.



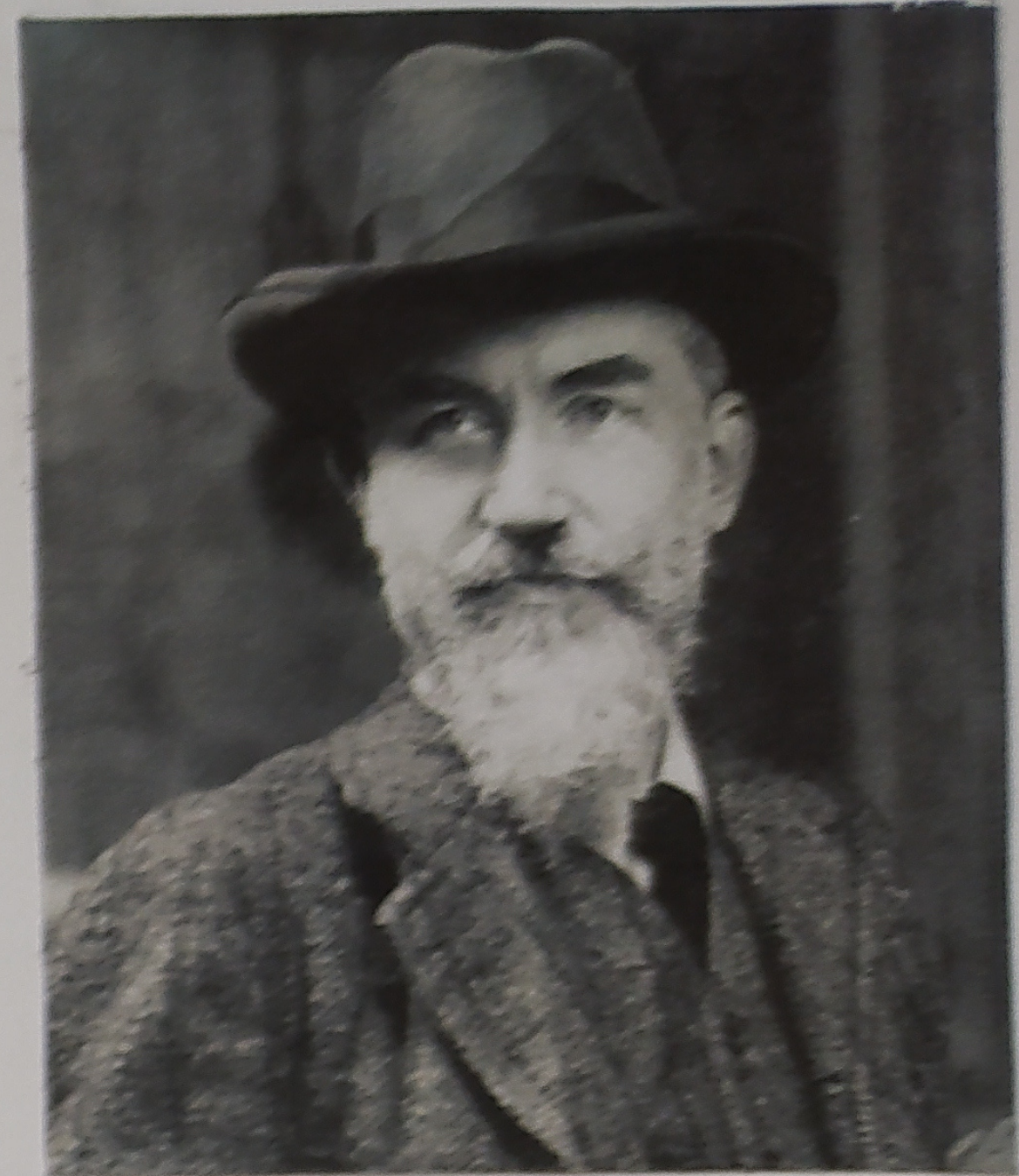
Was the Titanic founded in Ireland?

Yes, the Titanic  
was created in  
Ireland.



Was George Bernard Shaw Irish?

Yes, he is the famous Irish playwright.



Is Ireland a country of pubs ?

Ireland is called the country of pubs. The oldest one is Sean's bar in Westmeath.

